

**STANDARD RESTROOM
(LOCATED IN THE NON-SALES / CORRIDOR)**

LIGHTING

DOWNLIGHTS

SHELVING

CABINET (NS-17)

FINISHES:

WALL PAINT

FLOOR

WAINSCOT

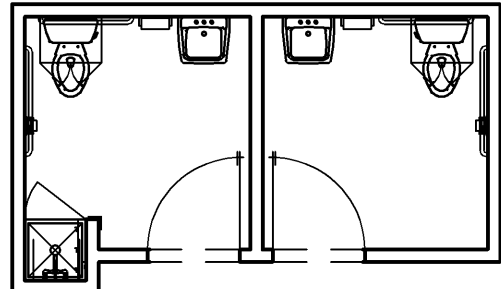
PT-1

FC-19

T-1

T-3

T-5



ELEVATED RESTROOM

LIGHTING

DOWNLIGHT

SHELVING

RECESSED CABINET (NS-36)

FINISHES:

WALL PAINT

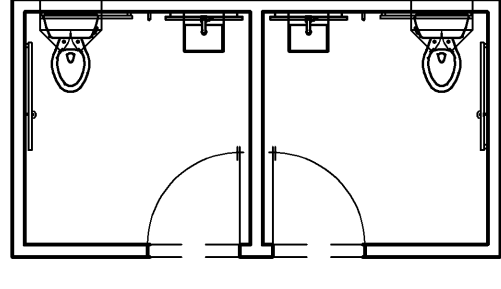
FLOOR

WALL TILE

PT-13

FC-18

T-7



**ELEVATED RESTROOM W/ COUNTERTOP
(WITH OR WITHOUT TOILET COMPARTMENT)**

LIGHTING

DOWNLIGHT

SHELVING

RECESSED CABINET (NS-36)

FINISHES:

WALL PAINT

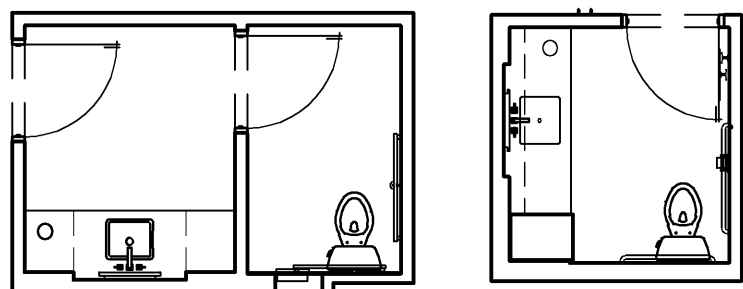
FLOOR

WALL TILE

PT-13

FC-18

T-7



RESTROOM LEGEND

FULL

R

42L-A051-000-LGND

FINISH NOTES

FULL

42N-A051-M00-NOTE

M

10.14.11

**FC-18 CROSSVILLE TILE
LAYOUT @ ENTRY**

3/4" = 1'-0"

42D-A051-H00-DETL

H

06.03.10

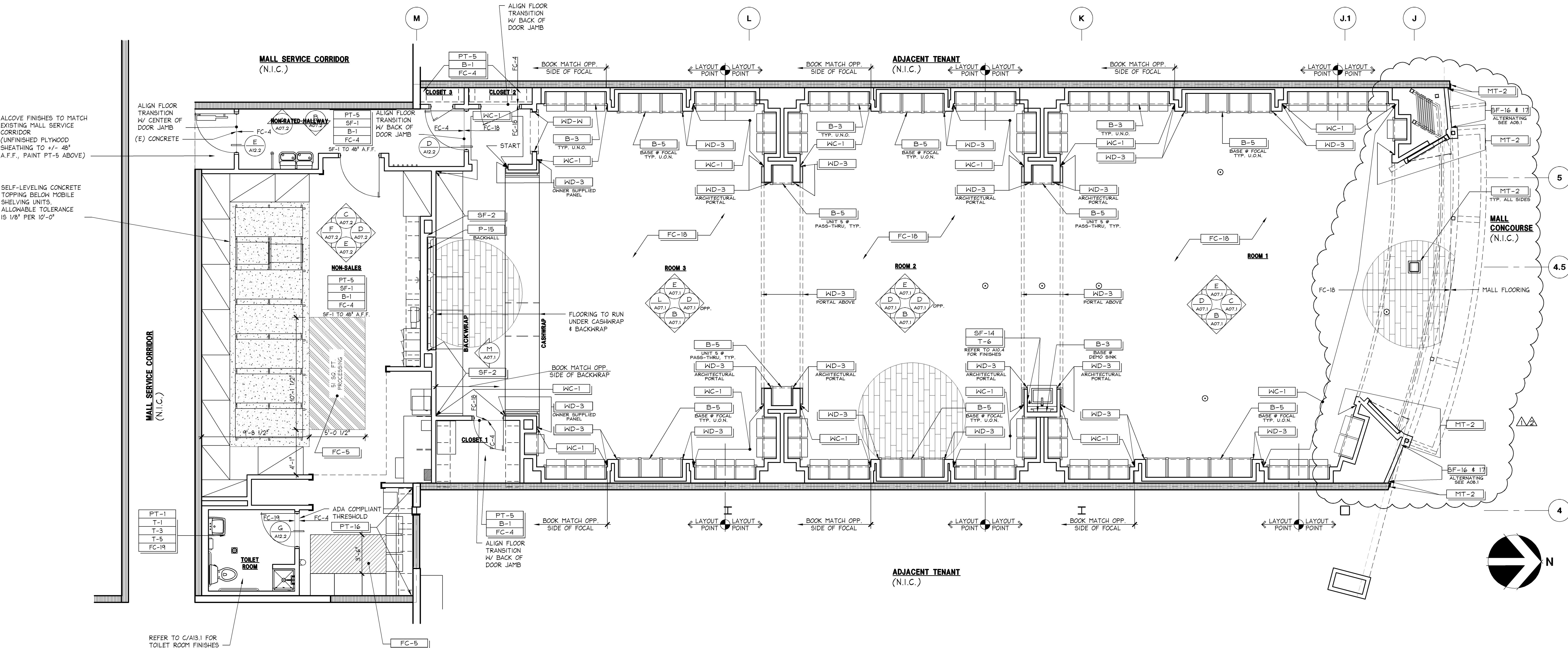
FINISH PLAN NOTES

FULL

42N-A051-D00-NOTE

D

08.31.09



FLOOR & WALL FINISH PLAN

1/4" = 1'-0"

42P-A051-A00-PLAN

A

10.14.11

024200396

BATH & BODY WORKS
MEMORIAL CITY MALL
303 MEMORIAL CITY WAY
HOUSTON, TX 77024

PROJECT INFORMATION:

REVISIONS:
REVISION 1 - LK / FINISH COMMENTS 6/27/2014
REVISION 2 - LL / FINISH COMMENTS 6/27/2014

ELITE CONSTRUCTION GROUP
LAKE JACKSON, TX
PHONE: 979-285-0712
NOTE: THESE PRINTS HAVE BEEN
REPRODUCED BY 50 PERCENT SCALE
WILL BE 50 PERCENT OF WHAT IS
NOTED ON PLANS

DATE ISSUED: 04/11/2014 SF
DESIGNED BY: TSG
DRAWN BY: TSG
CHECKED BY: TBD

**FLOOR & WALL
FINISH PLAN**

DRAWING NUMBER:

A05.1